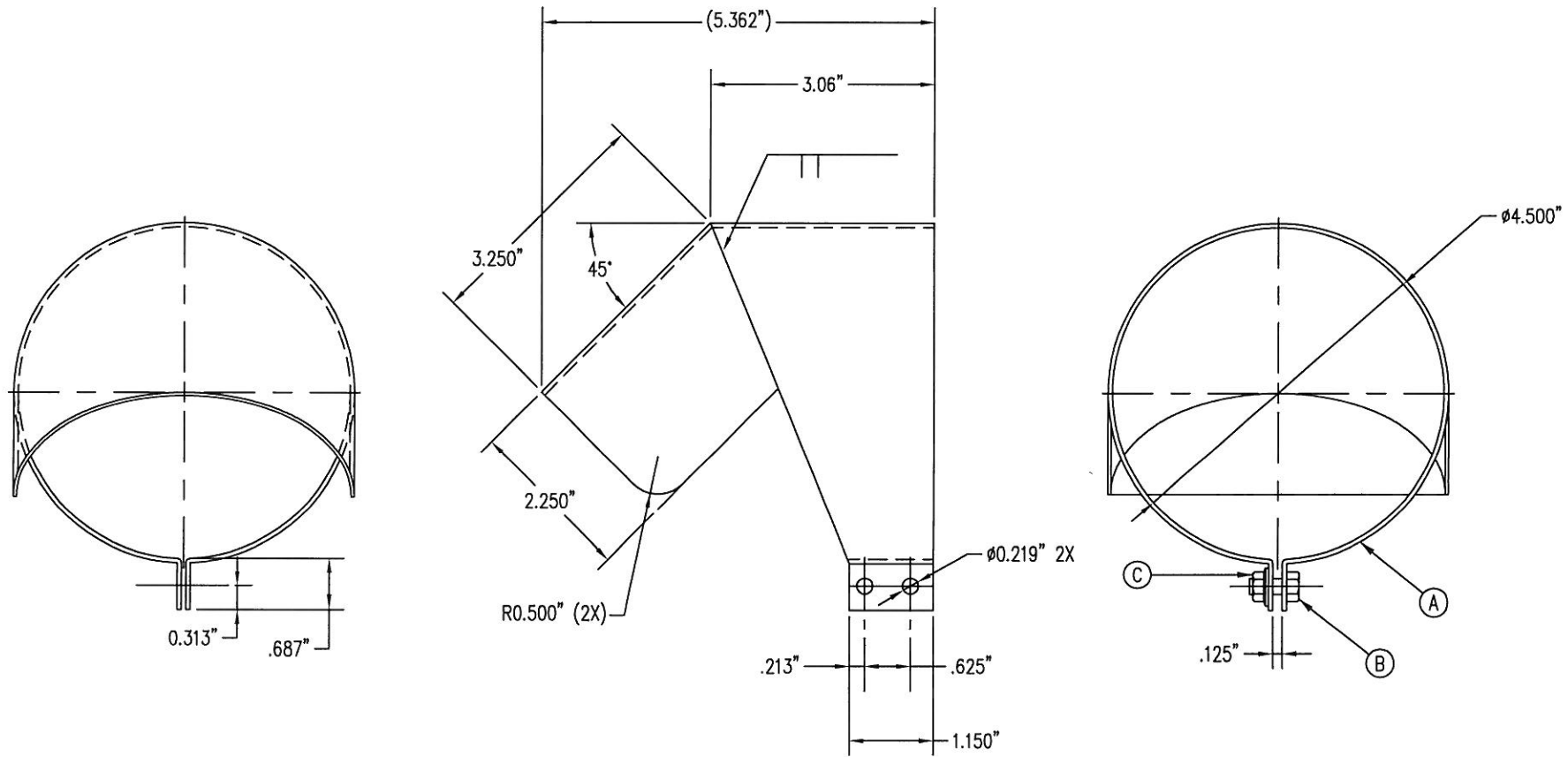


REV	REVISION DESCRIPTION
DATE	



NOTES:
 1 DEBURR, BREAK ALL EDGES
 2 MINIMUM BEND RADIUS, UNLESS NOTED.
 This design and specification is the exclusive property of Aero Tech Mfg. Inc. It and/or the design therein are not to be copied, sold, transferred or reproduced in any way and subject to return on demand. The items described may not be built or assembled or its design criteria disclosed to other parties without the written permission of Aero Tech Mfg. Inc.

C	2	#10-24 HEX SEARATED FLANGE NUT 1/4" NYLON INSERT ZINC PLATED	HNMT-0215
B	2	SCREW #10-24 X .100 LONG HEX HEAD CAP SCREW ZINC PLATED	HNSC-0567
A	1	SHEET, STAINLESS STEEL 304 16 GAUGE	SHSS-0003
ITEM REV#		MATERIAL DESCRIPTION	PART NO. OR DWG REF
ITEM OUTLET HOOD, EXHAUST			
TOLERANCES UNLESS NOTED	DRAWN	THE FILE	10-9-01
1/8" & 1/16" DECIMALS	CHKD	V. KRATZER	DATE
3/32" & 1/32" ANGLES & FINISH	CUSTOMER		
		PREV. DWG #045141 REV C	
		PART NO.	
		DWG NO. 060158	
		REV.	

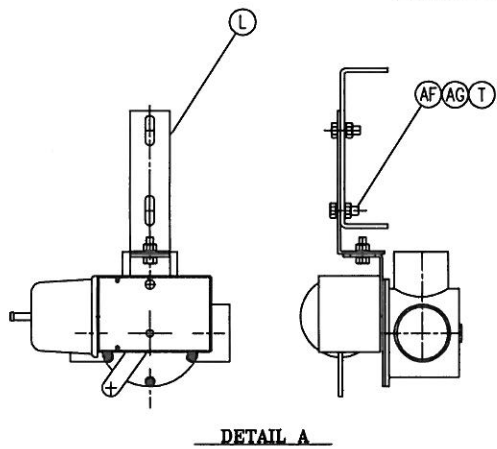
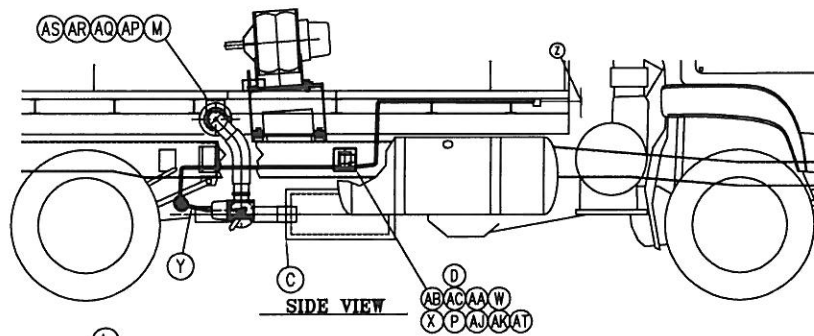
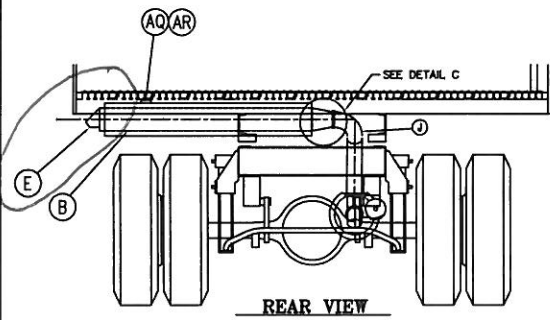
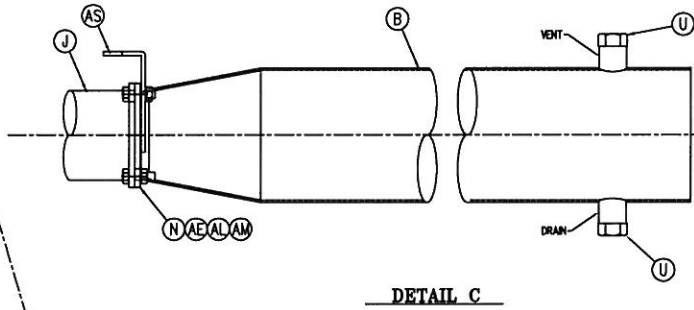
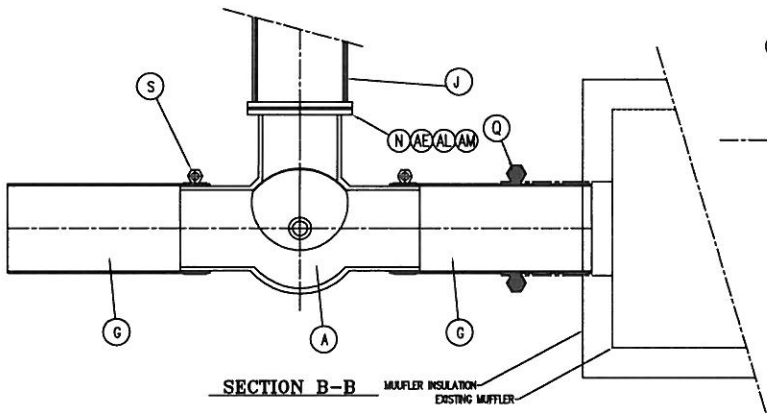
P/M	1	ASSEMBLY, EXHAUST SYSTEM	000002A
REV'D		NEXT PROCESS DRAWING	DWG No.



AERO TECH
 MANUFACTURING
 INC.

21
20
19
18
17
16
15
14
13
12
11
10
9
8
7
6
5
4
3
2
1

1 2 3 4 5 6 7 8 9 10 11 12 13 14 15 16 17 18 19 20 21 22 23 24 25 26 27 28 29 30 31 32 33



REV	REVISION DESCRIPTION
DATE	REVISED
056	
0-21-04	
13	ADDED NEW DIVERter VALVE
9-02-05	
14	ITEM Q WAS QTY 2
1-6-05	

AT	2	1/4-20 NYLON INSERT LOCK NUT	
AS	1	SUPPORT BRACKET E-3 HEAT EXCHANGER	000309
AR	4	3/8 FLAT WASHER ZINC PLATED	HWB-0019
AQ	2	BOLT, 3/8-16 X 2 3/4" LONG HEX HEAD ZINC PLATED	HWB-0095
AP	1	BACKING PLATE	000195
AM	8	3/16 SPLIT LOCK WASHER ZINC PLATED	HWB-0224
AL	8	HEX NUT, 3/16-18 ZINC PLATED	HWB-0009
AK	2	#10 FLAT WASHER	HWB-0012
AJ	2	#10 SPLIT LOCK WASHER	HWB-0013
AG	2	3/8 FLAT WASHER ZINC PLATED	HWB-0146
AF	2	3/8-16 X 1" LG HEX BOLT PLATED	HWB-0223
AE	8	BOLT, 3/16-18 X 1.00 LONG FULLY THREADED ZINC PLATED	HWB-0094
AD			
AC	2	1/4-20 X 1" LG HEX BOLT PLATED	
AB	1	PLASTIC UTILITY BOX 4.8 X 4.8 X 2.2 NETWORK 33P6236	FLBX-0001
AA	2	HOSE BARB, 1/8 MPT X 1/4 HOSE	HWB-0050
Z	1	HOSE FEE, 3/8 X 3/8 X 1/4 PVC	HWB-0047
Y	5 FT	VACUUM HOSE, 1/4"	HWB-0050
X	2	SCREW, #10-32 X .50 LONG PAN HEAD ZINC PLATED	HWB-0029
W	1	EXHAUST SOLENOID	ELS-0006
U	2	PLUG, 1/2"-150# INHEADED HEX HEAD C.S.F.	PUL-0032
T	2	NUT, 3/8-16 W/ NYLON LOCK INSERT ZINC PLATED	HWB-0210
S	2	CLAMP, #10-32 CLAMP	CLMP-0036
Q	1	CLAMP, FULL CIRCLE 3" OD U-BOLT EXHAUST CLAMP ZINC PLATED Heat CHRG 4042325	CLMP-0021
P	1	FILTER, SOLENOID VALVE	PUL-0024
N	2	GASKET, EXHAUST BY-PASS VALVE	ENE-105
L	1	SUPPORT BRACKET, EXHAUST VALVE, FRAME SIDE	ENE-105
K			
J	1	EXHAUST PIPE	000195
H			
G	2	MUFFLER OUTLET PIPE	ENE-105
E	1	OUTLET HOOD, EXHAUST	000158
D	1	BRACKET EXHAUST SOLENOID	000002
C	1	MUFFLER INSULATION COVER	000157
B	1	WELD DETAIL, E-3 EXCHANGER	000070W
A	1	ASSEMBLY, EXHAUST BY-PASS VALVE MODIFIED C/W FLANGE S-000053	000400A-0
ITEM	REQ'D	MATERIAL DESCRIPTION	PART No. OR DWG REF

ASSEMBLY, EXHAUST SYSTEM

TOLERANCE: UNLESS NOTED
X & J JACK AND PRACTICE
Z & AS ANGLE 9° MIN

DATE: 10-05-01
BY: T. HASLAW
CHKD: [Signature]
CUSTO: [Signature]

SCALE: BULK DO NOT SCALE
SHT 1 OF 1

060002A

14

1	MAIN ASSEMBLY, GENERAL LAYOUT	060002A	
P/N	REV'D	DWG No.	
	HEAT PROCESS DRAWING		



PART No.	060002A	REV	14
DWG No.			